

KONICA MINOLTA



CONNECT_COMMUNICATE_CONTROL

PRO POWER

with the high-speed, high-volume
bizhub PRO 950

PRODUCTION PRINTER_COPIER_SCANNER



In a competitive, cost-conscious business world, production professionals must work faster and smarter – and the bizhub PRO 950 is purpose-built to do just that.

Unlike printer-copiers for office applications, the bizhub PRO 950 is a true professional – with high output speed, long-running reliability and flexible auto finishing capabilities. Its 95 ppm print/copy output can rise to 190 ppm with tandem printing capability. Rugged construction and robust monthly duty cycle of 750,000 pages keeps you ahead of increasing demands. And multiple finishing options let you produce more documents in less time, to meet the needs of corporate in-plant printing as well as commercial and print-for-pay customers.

A powerful standard image controller provides point-and-click simplicity. An on-board LCD screen can give you a thumbnail preview before you print. With seamless interfaces to Konica Minolta's Printgroove® Production Suite and EFI's advanced MicroPress® system, you'll also be able to incorporate the bizhub PRO 950 into a total print management environment. And you can count on professional back-up by industry-leading Konica Minolta service and support.

So put the bizhub PRO 950 to work on your production floor – and let a real PRO handle your high-volume workflow.

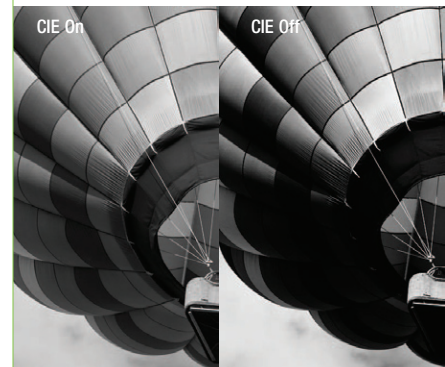
PRO PRODUCTION

to get print jobs done faster and better

User-friendly PS Plug-in Driver:

- ▶ Highly intuitive interface for easy navigation
- ▶ Quick print function for simplex, duplex and booklet printing
- ▶ Two tab types for greater flexibility in labeling
- ▶ Easily specify per-page settings
- ▶ Paper name function for easy media selection
- ▶ A selection of six languages to display interface

CIE Color. For jobs requiring exceptionally high image quality. The "Use CIE color" button separates the data for each color, offering detailed gradations.



Large LCD display. A large on-board touch-panel display makes operation simple, so you don't need trained personnel to get the job done. All printing and finishing functions are easily accessible through clear, intuitive menus – and thumbnail document preview lets you view documents before you print.

CONNECT_



Tone Curve Utility. Lets you easily adjust the density and brightness of images before printing. Also register 10 original tone curve settings to reuse for future jobs.

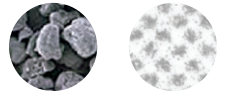
Screens for Any Output Type. In addition to standard Adobe dot screen settings, you can select from screens for photo (85 lpi), text (141 lpi) or text/photo (106 lpi) output to optimize the quality of any document type.



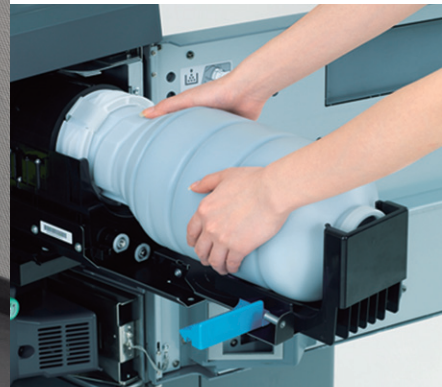
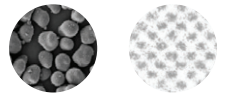


High-yield, high-resolution toner. Konica Minolta's exclusive Simitri® Polymerized Toner technology uses smaller, more uniform particles to improve detail, make text more legible and give graphics and halftones greater definition – and a toner yield of 80,000 impressions also looks better on your bottom line.

PULVERIZED



Simitri HD
High Definition Polymerized Toner



SPEED _ QUALITY _ RELIABILITY _ FLEXIBILITY _ SECURITY _



190 ppm tandem printing. With Tandem Print and Tandem Copy capabilities, you can link two bizhub PRO 950s together for blazing output speed of up to 190 ppm to meet last-minute, high-volume print deadlines.

Up to 95 ppm print/copy output. The bizhub PRO 950 is ruggedly designed for high-volume production demands – with a robust monthly duty cycle of up to 750,000 pages for long-running reliability and workhorse performance.

Scan-to-HDD for on-board document storage. With built-in scanning, you can store documents in secure digital mailboxes on a 30 GB engine hard drive. You can also Scan-to-Email, Scan-to-FTP and Scan-to-SMB on desktop PCs for fast, flexible document distribution.

Corporate reports and presentations, training manuals and human resource documents, newsletters, proposals, sales materials – you can produce them quickly on demand, in high quantities, with superior quality that keeps corporate and commercial customers coming back for more.

Along with the high output speed and robust design of the bizhub PRO 950, Konica Minolta offers you a full array of cost-effective auto finishing options to speed your on-demand document output. You can create saddle-stitched trimmed booklets, staple documents in any of 8 positions, 2/3-hole punch, GBC punch (6 punch patterns), half-fold, Z-fold or tri-fold pages, even add pre-printed color covers or inserts post-process.

Smooth-sliding metal drawers accept paper sizes up to 11" x 17" (up to 12" x 18" in bypass and optional Large Capacity Tray). Heavy stocks benefit from a precision paper path that maximizes uptime. And even in fully loaded configuration, the bizhub PRO 950 maintains a compact footprint – putting more production power in minimum floor space.

PRO PERFORMANCE

to print and finish more documents in less time



COMMUNICATE_

Create booklets, mailers and flyers.

The optional FS-611 Booklet Finisher lets you fold and saddle-stitch up to 20 sheets to create 80-page booklets – and you can also staple up to 50 sheets and half-fold or tri-fold sheets for direct-mailers and flyers.

Handle large sizes and index stock.

You can copy full-bleed 11" x 17" originals on 12" x 18" paper to preserve crop marks and borders – and even print on up to 14-point stock.





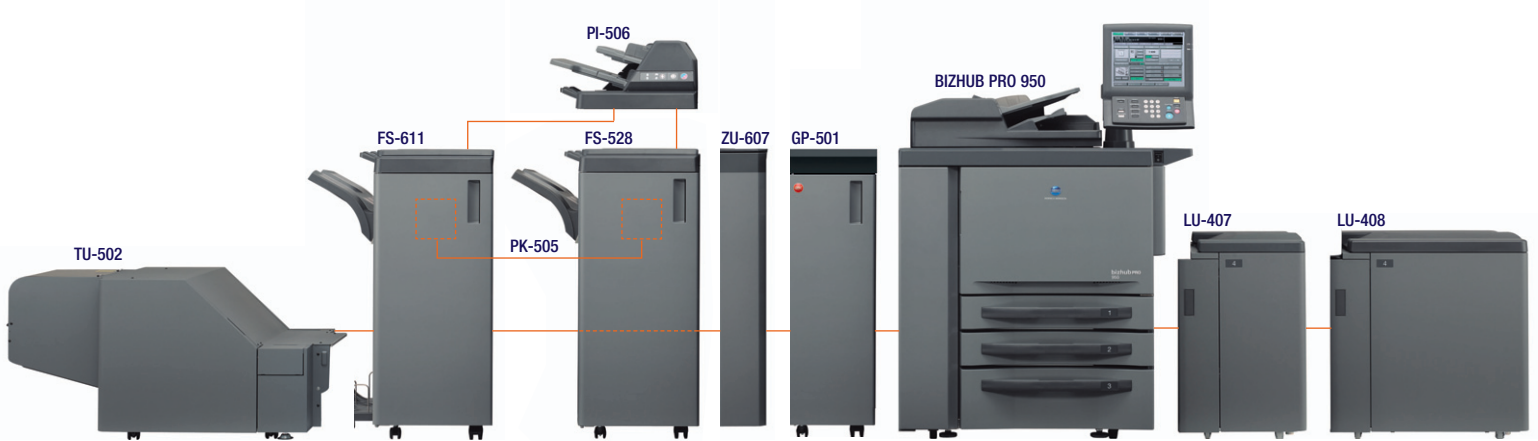
Auto trimming for a more professional look. The optional TU-502 Trimmer Unit provides face trimming capability for your FS-611 Booklet Finisher.

Add color covers and insert pages. With the optional PI-506 Post-Insertion Tray, you can automatically add preprinted covers or inserts post-process to avoid manual collating.

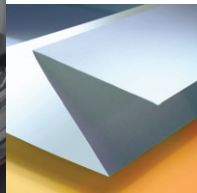
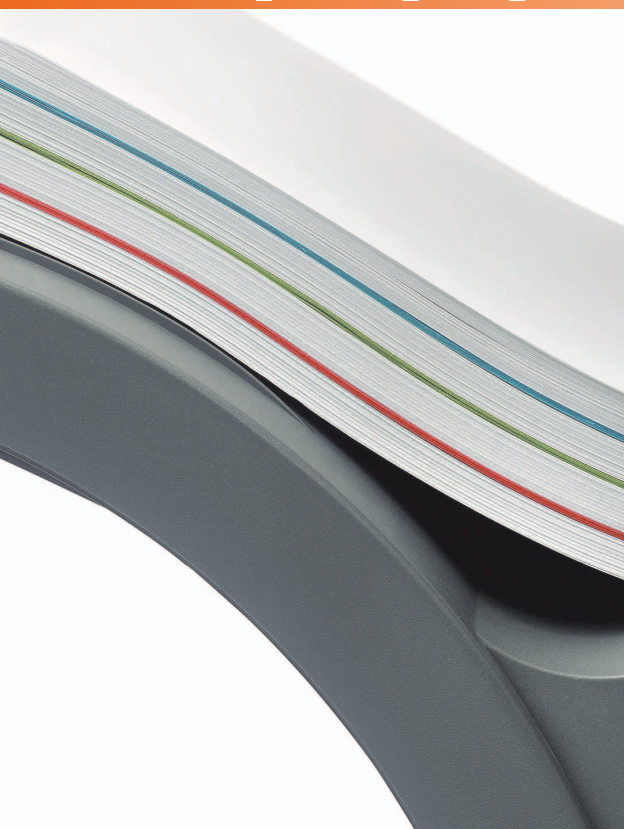
Hole-punch pages for presentations and manuals. Add the PK-505 Punch Unit to your FS-611 or FS-528 Finisher, and you'll have selectable 2/3-hole punch capability for binder presentations and training manuals.

Simple auto finishing. A compact, cost-effective FS-528 Finisher option provides sorting and 8-position stapling for sets of up to 100 sheets, with staple-cutting for perfect, professional stapled output without staple overlap.

Fast, high-capacity RADF. The bizhub PRO 950 provides a standard Reversing Auto Document Feeder that loads up to 100 sheets, including originals up to 11" x 17" – and sheet-through scanning technology lets you feed more originals faster.

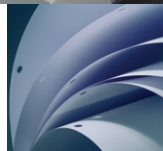


REPORTS_BOOKLETS_FLYERS_MANUALS_PROPOSALS_



Up to 6,650-sheet paper capacity. A 1,000-sheet universal paper tray plus two 500-sheet universal trays and a 150-sheet manual bypass give you standard paper capacity of 2,150 sheets. Add an optional Large Capacity Tray, and you'll have 6,650-sheet capacity to handle long print/copy runs with less reloading.

GBC Punching Unit. The GP-501 Punching Unit punches letter-sized sheets in any of 6 punch patterns via user-replaceable die sets.



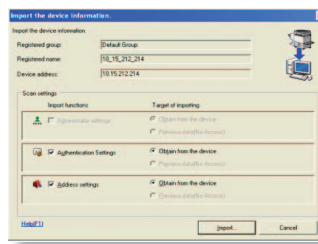
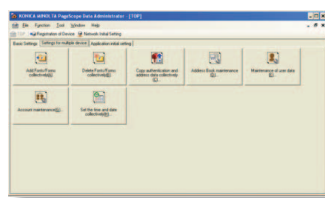
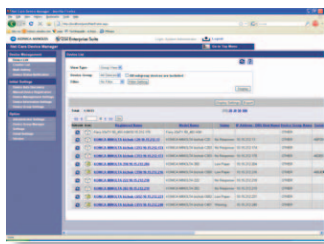
For every print professional, control is the key to productivity – so the bizhub PRO 950 comes with a powerful standard image controller for printing, scanning and finishing with point-and-click ease.

You'll have a fast 2 GHz CPU, versatile Windows/Mac drivers, built-in PCL5e/PCL6, even optional Adobe PostScript 3 capability to process print jobs faster. The controller has its own 80 GB HDD for printing and network scanning support – and you can also control multiple jobs at once, recall jobs and job settings from memory, program jobs, and check status of jobs in queue.

To meet the needs of today's networked production workflow, powerful PageScope® software lets you manage devices and documents throughout your system. With Konica Minolta's powerful Printgroove® production suite, you can create a powerful, scalable system that manages your entire production floor. And interface with EFI's advanced MicroPress® server gives you access to industry-leading print management capabilities for complex production demands and WYSIWYG job make-ready.

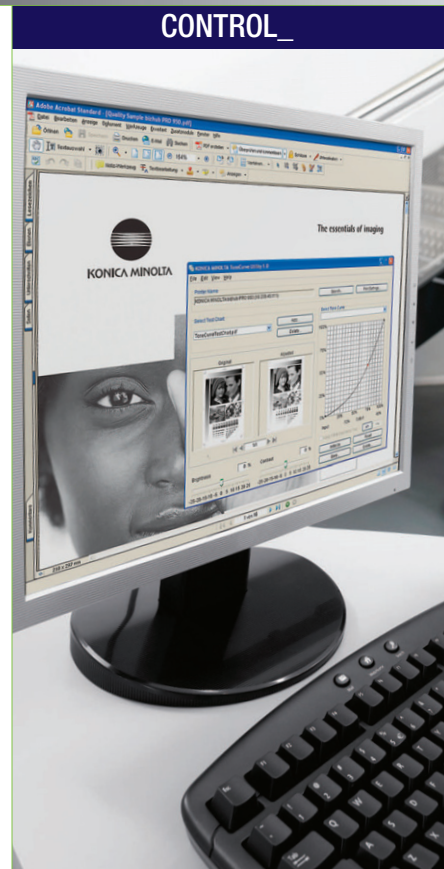
PRO CONTROL to manage your print floor and production workflow

Enhanced security protection. Networked systems demand increased security – so the bizhub PRO 950 gives you password protection, user authentication, encryption and other ways to protect sensitive data, including ISO 15408 Certification to meet strict security standards.



Powerful PageScope® software. Konica Minolta software solutions for web-based monitoring and network control, integrated IP addressing and security, enterprise-system integration, personal document management, printing from the Internet and more.

Manage documents and devices. PageScope Web Connection gives each bizhub device its own "website" for online access to status information via standard web browsers. PageScope Net Care Device Manager lets IT administrators combine bizhub PRO and other MIB-compliant devices in a single network. And PageScope Data Administrator™ manages device user lists, enables account tracking, sets up one-touch Email addresses and manages password and security functions.



CONTROL_

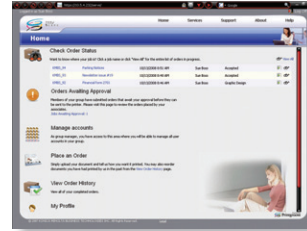


Printgroove® – the award-winning production suite.

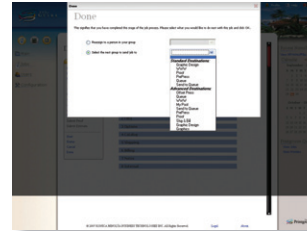
The bizhub PRO 950 is designed for seamless interface with Konica Minolta's Printgroove Suite, now enhanced in v.1.3 – providing total print production automation at far less cost than competitive workflow management systems. With Printgroove running your production floor, you can initiate print jobs 24/7, automate job ticketing, handle edits and make-ready tasks, view documents as thumbnail images, share print data, display job status, manage budgets and more.



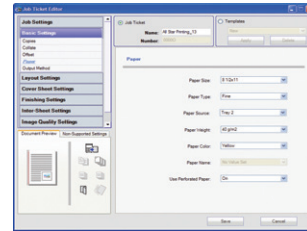
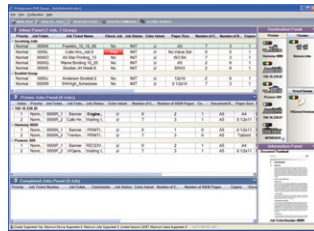
PRINTGROOVE SERVE: FOR 24-HOUR CUSTOMER ACCESS



PRINTGROOVE GUIDE: MAXIMUM OUTPUT, MINIMUM COST



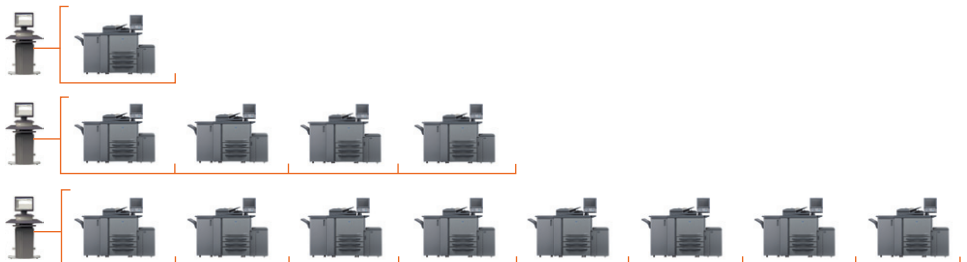
PRINTGROOVE QUEUE: MANAGED PRINTING WITH AUTOMATED EASE



INPUT_OUTPUT_CLIENTS_SCHEDULES_BILLING



MicroPress® support. You can also interface with Efi's modular MicroPress print server, for a right-size solution that matches the needs of your workflow – from entry-level production to cluster printing, digital prepress, expert make-ready tools, advanced job management and more.



CLUSTER PRINTING: 3 optional configurations and a maximum of 12 Engines.

bizhub PRO 950



PRODUCTION_PRINTER_COPIER_SCANNER



▼ BIZHUB PRO 950 GENERAL SPECIFICATIONS:

TYPE:	PRODUCTION PRINTER/COPIER/SCANNER
IMAGING SYSTEM:	HIGH-SPEED DUAL BEAM LASER IMAGING
DEVELOPMENT SYSTEM:	SIMITRI® POLYMERIZED TONER
MONTHLY DUTY CYCLE:	750,000 PAGES
PRINT/COPY SPEED:	95 PPM (8-1/2" X 11")
PRINT/COPY RESOLUTION:	600 X 600 DPI (1200 X 600 DPI EMULATION)
HALFTONE REPRODUCTION:	256 GRADATIONS
MEMORY:	256 MB (STANDARD), 30 GB HARD DISK DRIVE
WARM-UP TIME:	5.5 MINUTES (APPROX.)
FIRST COPY:	3.1 SECONDS OR LESS (APPROX.)
COPY QUANTITY:	1 - 9,999 COPIES
MAGNIFICATION:	ZOOM RANGE: 25 - 400%, 0.1% INCREMENTS, PRESET REDUCTION: 79%, 77%, 65%, 50%, PRESET ENLARGEMENT: 121%, 129%, 155%, 200%
EXPOSURE MODES:	AUTO, TEXT, PHOTO, TEXT/PHOTO, MANUAL
MAXIMUM ORIGINAL SIZE:	12" X 18" (11" X 17" THROUGH RADF)
PAPER SIZE (THROUGHPUT):	5-1/2" X 8-1/2" TO 12" X 18"
PAPER WEIGHTS (THROUGHPUT):	11 LB. BOND TO 57 LB. BOND (MAX. 244 GSM = 90 LB. COVER – UP TO 300 GSM THROUGH BYPASS AND LCT)
PAPER SUPPLY:	500-SHEET UNIVERSAL PAPER TRAYS (2), 1,000-SHEET UNIVERSAL PAPER TRAY, 150-SHEET INTELLIGENT BYPASS (TO 12" X 18")
OPTIONAL PAPER SUPPLIES:	4,500-SHEET LARGE CAPACITY TRAY (8-1/2" X 11" PORTRAIT), 4,000-SHEET LARGE CAPACITY TRAY (TO 12" X 18")
MAXIMUM PAPER CAPACITY:	6,650 SHEETS (TOTAL, WITH OPTIONS)
DOCUMENT FEEDER:	SPEED: UP TO 95 ORIGINALS PER MINUTE, CAPACITY: UP TO 100 SHEETS, PAPER SIZE: 5-1/2" X 8-1/2" TO 11" X 17", PAPER WEIGHT: 14 LB. BOND TO 53 LB. BOND (110 LB. INDEX)
POWER REQUIREMENTS:	208V-240V, 16 A, 60HZ (DEDICATED LINE)
DIMENSIONS (W X D X H):	35" X 30-3/4" X 47-3/8"
WEIGHT:	616 LBS.
OPTIONS:	FS-611 BOOKLET/FOLDING FINISHER (50-SHEET STAPLING, HALF-FOLD, TRI-FOLD, SADDLE-STITCH BOOKLETS), FS-528 MULTI-STAPLING FINISHER (STAPLES UP TO 100 SHEETS WITH STAPLE CUTTING FUNCTION), GP-501 PUNCHING UNIT (DIE SET OPTIONS: DS-501 3-HOLE DIE PUNCH, DS-502 12-HOLE CERLOX PUNCH DIE, DS-503 32-HOLE WIREBIND PUNCH DIE, DS-504 21-HOLE WIREBIND PUNCH DIE, DS-505 44-HOLE COLOR COIL PUNCH DIE, DS-506 11-HOLE VELOBIND PUNCH DIE), LU-407 LARGE CAPACITY TRAY (4,500 SHEETS, 8-1/2" X 11"), LU-408 LARGE CAPACITY TRAY (4,000 SHEETS, TO 12" X 18"), MK-721 MOUNT KIT (FOR TU-502 TRIMMER UNIT), MK-724 MOUNT KIT (FOR GP-501 PUNCHING UNIT), PI-506 POST-PROCESS INSERTER, PK-505 PUNCH UNIT, PS-504 ADOBE POSTSCRIPT KIT, TU-502 TRIMMER UNIT, ZU-607 PUNCH AND Z-FOLD UNIT
PAGESCOPE APPLICATIONS:	PAGESCOPE WEB CONNECTION (EMBEDDED WEB PAGE FOR DEVICE), PAGESCOPE NET CARE DEVICE MANAGER (NETWORKED DEVICE MANAGEMENT), PAGESCOPE JOB SPOOLER (PRINT QUEUE MANAGEMENT), PAGESCOPE DIRECT PRINT (DRAG-AND-DROP PRINTING OF TIFF AND PDF FILES)
SECURITY:	ISO-15408 COMPLIANT
AVAILABLE FUNCTIONS:*	ACCESSIBILITY, ACCOUNT MANAGEMENT (PRINT/COPY/SCAN COUNTER), AUTO DOCUMENT FEEDING, AUTO DUPLEX (STACKLESS), AUTO EXPOSURE SETTING, AUTO LAYOUT (CENTERING), AUTO LOW POWER, RESET, SHUT-OFF, AUTO MAGNIFICATION, AUTO PAPER SELECT, AUTO TRAY SWITCHING, BOOK COPY, BOOKLET MAKING, BORDER ERASE (FRAME, FOLD, FRAME & FOLD), CHARACTERIZATION, CONCURRENCY (COPY, PRINT, SCAN), CUSTOM ORIGINALS, COVER INSERTION, DUPLEX PRINTING, ELECTRONIC COPY MONITOR (1,000 ACCOUNTS), ENERGY SAVE MODE, EXPOSURE MODES (AUTO, TEXT, PHOTO, TEXT/PHOTO, MANUAL), FACE-UP OR FACE-DOWN OUTPUT, FOLDING (HALF-FOLD, TRI-FOLD, Z-FOLD), GROUPING, HELP (CONTEXT SENSITIVE), HOLE-PUNCHING (2/3-HOLE), IMAGE CENTERING, IMAGE OVERLAY, IMAGE INSERT, IMAGE ROTATION, IMAGE SHIFT, IMPOSITION, INSERT SHEETS, INTELLIGENT JOB BUILDING, INTERRUPT (PAUSE), IPP PRINTING, JOB LIST, JOB RESERVE (MAX. 99 JOBS), JOB PROGRAMMING (30 JOBS), JOB STATUS, LOW POWER MODE, MIXED ORIGINAL DETECTION, NEGATIVE IMAGE CAPABILITY, NETWORK SCANNING, NON-IMAGE AREA ERASE, OFFLINE FINISHING, PRESET SCALING, POST-PROCESS COVER/SHEET INSERTION, POWER SAVE, PRINT SPOOLING (MAX. 99 JOBS), PROOF COPY, SADDLE-STITCHING, SECURE PRINT, SORTING, STAMPING (CONTINUOUS), STAPLING (8-POSITION), STORYBOARDING (2-IN-1, 4-IN-1, 8-IN-1 TO 16-IN-1 FROM PRINT DRIVER), TABS, TANDEM COPY CAPABILITY, TRANSPARENCY INTERLEAVING (BLANK OR COPIED SHEETS), TRIMMING MODE, WATERMARKING, WATERMARK NUMBERING, WEEKLY TIMER, ZOOM
AVAILABLE SCAN FUNCTIONS:	SCAN-TO-E-MAIL (WITH LDAP), SCAN-TO-FTP, SCAN-TO-SMB (DESKTOP), SCAN-TO-HDD (MAILBOX), TWAIN SCANNING

▼ EMBEDDED IMAGE CONTROLLER:

TYPE:	EMBEDDED IMAGE CONTROLLER
CENTRAL PROCESSING UNIT:	PENTIUM M 2.0 GHZ
MEMORY/HDD (SHARED WITH ENGINE):	2 GB (STANDARD), 80 GB HARD DISK DRIVE
PRINT SPEED:	95 PPM WITH BIZHUB PRO 950
PRINT RESOLUTION:	600 X 600 DPI (1200 X 600 DPI EMULATION)
SCANNING:	SCANNING IN TIFF AND PDF FORMATS, SCAN-TO-EMAIL (WITH LDAP), SCAN-TO-FTP, SCAN-TO-SMB (DESKTOP), SCAN-TO-HDD (MAILBOX), TWAIN DRIVER FOR SCAN RETRIEVAL FROM HDD
SCANNING SPEED:	UP TO 95 OPM (ORIGINALS PER MINUTE)
PRINT DRIVERS:	WINDOWS 2000, WINDOWS XP, WINDOWS SERVER 2003, WINDOWS XP PROFESSIONAL X64, WINDOWS SERVER 2003 X64, WINDOWS VISTA (X32, X64) MACINTOSH OS X 10.2/10.3, MACINTOSH OS X 10.4 (PPC/INTEL), MACINTOSH OS X 10.5 (PPC/INTEL)
PAGE DESCRIPTION LANGUAGE:	STANDARD: PCL 5E/XL (PCL6), TIFF, DIRECT PRINT, OPTIONAL: ADOBE POSTSCRIPT 3, PDF DIRECT PRINT
PROTOCOLS:	TCP/IP, IPX/SPX, ETHERTALK, IPP, NETBEUI



bizhub PRO



KONICA MINOLTA
BUSINESS SOLUTIONS U.S.A., INC.
100 Williams Drive
Ramsey, NJ 07446
www.kmbs.konicaminolta.us
www.konicaminolta.us/solutions

© 2009 KONICA MINOLTA BUSINESS SOLUTIONS U.S.A., INC. All rights reserved. Reproduction in whole or in part without written permission is prohibited. Konica Minolta and The essentials of imaging are trademarks of KONICA MINOLTA HOLDINGS, INC. bizhub and Printgroove are trademarks of KONICA MINOLTA BUSINESS TECHNOLOGIES, INC. Simitri is a registered trademark of KONICA MINOLTA BUSINESS SOLUTIONS. MicroPress is a trademark of EFI. All other brands and product names are registered trademarks or trademarks of their respective owners.

*Design & specifications are subject to change without notice.
Some functions may require options, which may or may not be available at time of launch.