



KONICA MINOLTA

bizhub PRESS

C7000/C6000

Evolution. And more.
High-speed digital colour printing system



A4 Black and White **71** pages/min
A4 Full Colour **71** pages/min

*Printing speed may vary according to the paper weight.

A4 Black and White **60** pages/min
A4 Full Colour **60** pages/min

*Printing speed may vary according to the paper weight.

Giving Shape to Ideas

 Full colour, on-demand printing system

bizhub PRESS

C7000/C6000

**One comprehensive system.
A total printing solution.**

Successful digital colour print production requires efficiency, reliability and superb results. Introducing new bizhub PRESS C7000/C6000, a scalable digital printing system that offers versatile media handling, professional finishing and simplified workflow integration. A cost effective solution well suited to a wide variety of printing operations that demand the best.

bizhub PRESS 

bizhub PRESS creates new values for printing businesses by providing innovations through high-level technologies and a new workflow in digital printing based on high quality products and services that offer high value-added total solutions.

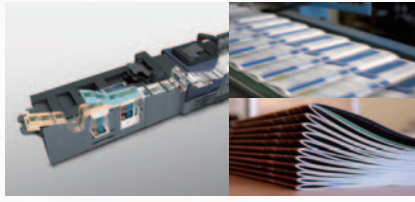
Remarkably high image quality



From start to finish, consistent quality for professional results

Superb image quality rivals offset printing. The IDC sensor and new colour control ensure consistent results through the entire print run.

Exceptional modularity, excellent versatility



Versatile and scalable for any on-demand printing requirement

A choice of image controllers and inline finishing options (including perfect binding) let you customise the system depending on requirements.

Unmatched reliability for maximum uptime



Excellent usability and reliability for peerless efficiency

Highly cost efficient, the system achieves smoother performance with enhanced durability, long-life consumables and shorter startup time.



From start to finish, consistent quality for professional results

Advanced screen technology and 1,200 dpi resolution produce crisp text and vivid, smoothly gradated photos that are nearly indistinguishable from offset output. From the first page to the last, your print jobs will have a slick, professional look.

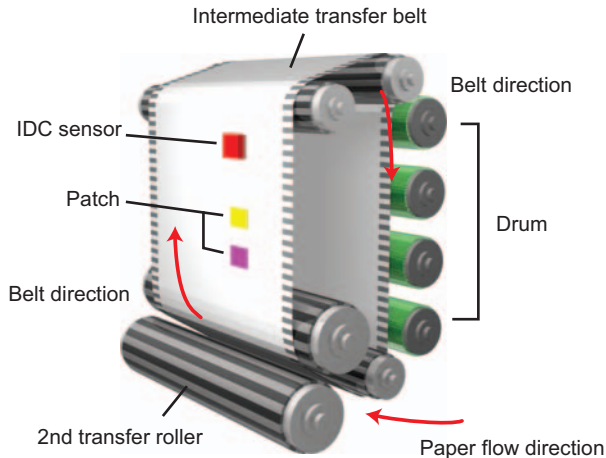


Stable continuous printing of documents up to 5,000 pages long

Adjustment of colour density and halftones

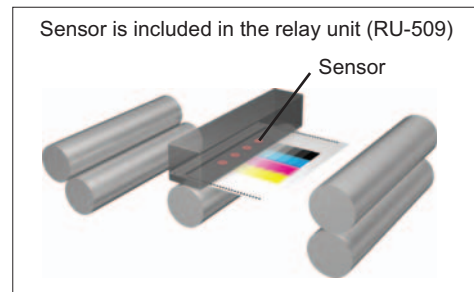
New precision IDC sensor for more stable output

Keys to stable, high-quality results are consistent CMYK density and halftone dot diameters. To maintain optimal settings of both, sensors on the intermediate transfer belt monitor control patches and feedback on colour density and halftones. By receiving feedback on colour density and halftone dots, the system can automatically make adjustments for more stable output.



Beautiful gradations that match paper type Effortless colour density control

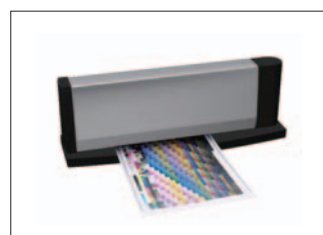
Incorporating new colour density control, bizhub PRESS C7000/C6000 automatically adjusts gradation depending on paper. A density sensor in the optional RU-509 Relay Unit reads colour patches printed on paper and relays gamma adjustments to the print engine. Additionally, correction values of up to 15 pre-registered paper types can be applied to achieve proper gradation for the paper being used. This eliminates the need to manually adjust colour density when changing media, a common time-consuming task.



Enhanced calibration over the print surface Improved density balance adjustment

Additional density control is provided by a new density balance adjustment function. A colour chart is printed and read with a spectrophotometer*. Results are then uploaded to the main unit via USB memory device and stored, significantly improving operation efficiency during registration and setup to achieve excellent consistency. And for more precise density balance control, bizhub PRESS C7000/C6000 includes a 256-step fine adjustment function and a 32-division density adjustment width.

* Calibration via X-rite Series spectrophotometer (X-rite i1iSis XL or X-rite i1) is available from your local sales representative. Not available in all areas.



iliSis XL



i1 Pro

Razor-sharp text and breathtaking photos with nearly offset quality

A new level of image quality and definition S.E.A.D. II

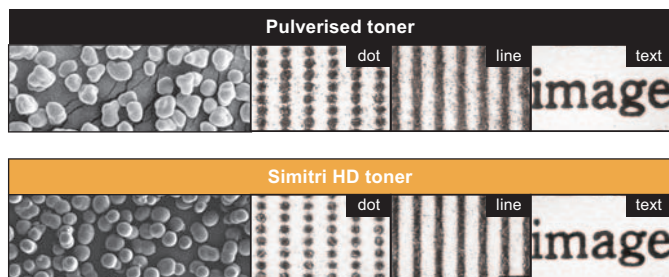
Combining leading-edge digital image processing technologies, S.E.A.D. II (Screen-Enhancing Active Digital Process) realises superlative tonal gradations, colour consistency and text clarity. S.E.A.D. II features 1,200 dpi 8-bit data processing for high precision, dot position control which segments each dot into 256 parts and Konica Minolta's original image stabilising system — all working in tandem to deliver offset-like quality.



High definition polymerised toner Konica Minolta's Simitri HD

Compared with pulverised toner, Simitri HD toner particles are extremely small with a consistent shape and size. This makes for brilliant, lustrous colour images and razor-sharp text and line drawings. The low fusing temperature of Simitri HD reduces heat load during printing, delivering superior reproduction on a wide range of papers (including thick stock) and saving on energy consumption.

Simitri HD
High Definition Polymerized Toner



Higher fade resistance than offset ink

Proprietary Simitri HD toner prevents fading and peeling for documents that retain their beauty and texture even in storage. The toner contains strong-bonding colour pigment that is highly resistant to chemical changes and can withstand extended exposure to UV light, making it more fade resistant than ink used in offset printing.



Simitri HD toner resists fading for long-lasting quality.



High resolution printing

True 1,200 dpi x 8-bit resolution colour output

The impressive resolution, made possible by 8-bit multi-layer data processing and an aluminium die-cast laser unit, reveals all the minute details of original data, eliminating the need for offset printing for nearly any print job. Additionally, bizhub PRESS C7000/C6000 provides high-production printouts of RIP-data at 3,600 dpi (equivalent) x 1,200 dpi resolution.

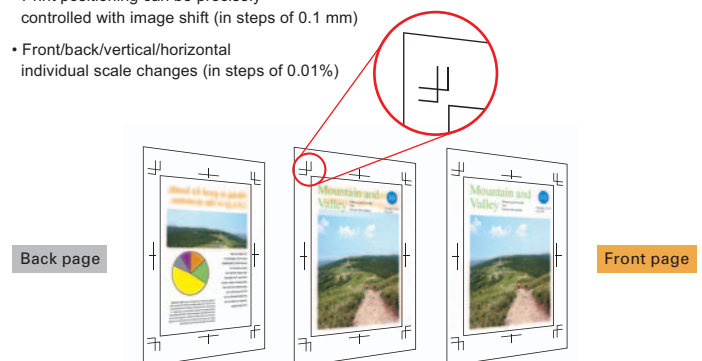
Outline processing for excellent readability

The 1,200 dpi resolution also results in optimised outline processing for better reproduction of small text and fine lines as well as jagged-free text and graphics. Outline processing improves the appearance of characters by thinning them, reducing blur of white characters and improving contouring.

Critical alignment for double-side documents Superior back-to-front registration

The highly accurate back-to-front registration of bizhub PRESS C7000/C6000 allows production of high-quality booklets and brochures. Front edge and skew sensors closely monitor paper position and alignment shift during printing. Any misalignment detected can be precisely corrected via the control panel.

- Print positioning can be precisely controlled with image shift (in steps of 0.1 mm)
- Front/back/vertical/horizontal individual scale changes (in steps of 0.01%)



Highly accurate front/back registration



Impressive performance, intuitive management

A choice of controllers lets you configure the system to perfectly match your production requirements. Combined with an easy-to-use interface, you are assured a fast, efficient and operator-friendly workflow.



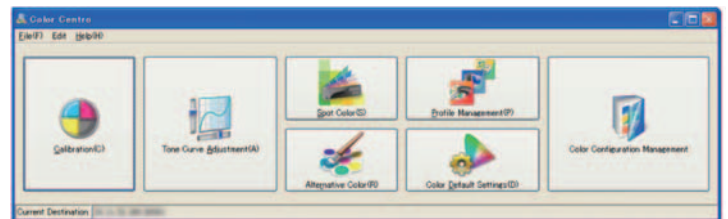
Excellent multi-purpose performance

Konica Minolta IC-601 Image controller (option; embedded)

The new Konica Minolta IC-601 Print Controller offers powerful workflow features including 1,200 dpi printing at speeds up to 71 ppm (A4), fast RIP processing/transfer between the controller and print engine as well as improved CMYK accuracy. There are also new colour management functions, improved job control, a full complement of editing functions and remote operation capability. The IC-601 supports Postscript, PDF1.7 and XPS and other PDLs.

Color Centro - Powerful colour management

Konica Minolta's proprietary colour management utility boasts a highly functional profiler with editing functions and support for spot colour. This software is ideal for both advanced and entry-level users.



Calibration

Create and manage calibration tables based on results obtained from optional spectrometers.

Tone curve adjustment

Adjust tone curve while checking a preview of sample images. Adjusted tone curves can be exported, registered in the controller and/or computer, and chosen from the printer driver, allowing easy fine-tuning during any job.

Spot colour management

Use the default spot colour table or customise and register a new one. The ability to make subtle changes to the default table realises more precise reproduction of spot colours in data created by any application, including those incapable of specifying spot colour.

Profile management

High-level production environments benefit greatly from the ability to register and manage up to five types of profiles with 50 detailed settings (5 x 50). Color Centro enables consolidation of multiple profiles and colour settings as Profile Sets that can be associated with paper types. With colour configurations that include multiple Profile Sets, various complex settings can easily be centrally managed and optimal colour settings for various jobs can be achieved with ease and efficiency.

- RGB source profile
- CMYK target profile
- Printer profile
- RGB-CMYK device link profile
- CMYK-CMYK device link profile

As profile sets are selectable based on the type of paper used, subtle adjustment of image quality is possible.

Use the default spot colour table or customised table to reproduce precise spot colours.

5-level settings are provided for UCR/GCR. The pure black function allows K100% printout.



Point colour adjustment functions allow subtle adjustment of specific colours from colour conversion profiles.

Individual profiles can be made for images, graphics and text regardless of CMYK or RGB mode.

PS Standard printer driver and A3 paper capability

Featuring a feature-rich and intuitive GUI, this driver provides excellent output and layout control. It lets you manage the entire process, including setting image quality for different types of paper and selecting print modes. The driver also supports A3+ paper and crop marks. A maximum paper size of 330mm x 487mm allows the creation of two-up A4-size spreads with crop marks and full-bleed printing.



15-inch touch-panel LCD facilitates workflow management

The bright colour touch-panel LCD and control panel let you easily manage operations and monitor progress. Help messages are conveniently displayed on the LCD, providing simple instructions to guide you through every step in the production process, from paper selection and colour configuration to finishing. Printing job management from the control panel enables you to make colour adjustments and pagination changes for RIP-completed jobs. Currently printing jobs and reserved jobs can be displayed for scheduling, and settings can be changed from the control panel.



World-renowned flexibility and ease-of-use

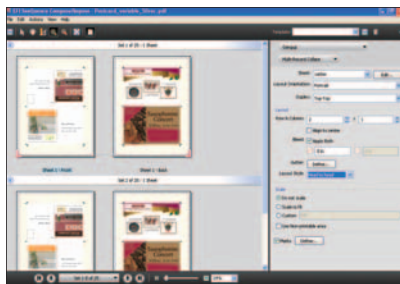
EFI™ Fiery IC-306 image controller (option; external)

IC-306 Fiery® Image Controller combines the upgraded functionality of Fiery System 9 and Fiery Driver 4.0 for Windows and Mac. Designed to handle a diverse range of requirements, this popular external print server boasts a rich feature set, including Command WorkStation 5 and its sophisticated colour management tools.



Variable data printing (VDP) for the business edge

Create timely and targeted marketing collateral for your customers with VDP, the ideal tool for customer relationship management and direct mail. Each printed piece can be customised during the print run by automatically adding names, addresses and other data. Optional SeeSequence Suite extends VDP capability by allowing you to impose, compose and preview print runs with one simple procedure.



Direct mail

Content can be customised to suit each recipient's taste and purchasing habits, including changes to page imposition.



Leaflets and flyers

Shop names, logos, special sales and business hours can be automatically changed during print run.



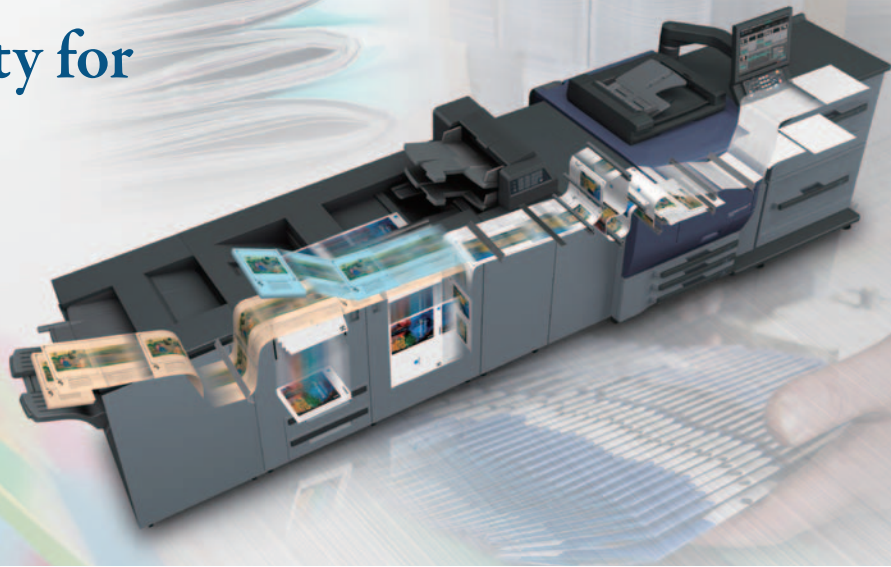
Tickets and coupons

Changing event and merchandise descriptions including price, date, time and numbering is easy to do.



Exceptional modularity for flexible scalability

The total digital printing solution designed to grow as your business grows. A wide variety of easy-to-install modules are available, allowing you to tailor bizhub PRESS C7000/C6000 to create the right system for any production application.



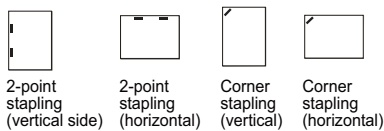
Customise to fit your needs

Wide array of inline finishers

Select from a wide range of modular units for high-speed, high-quality inline printing, processing and finishing. Flexible inline finishing options minimise labour and costly mistakes during complex jobs, including stapling, punching, folding, creating booklets and perfect binding. The easily configured modules enable you to build a right-size system for any print production environment and adapt to changing needs.

Staple up to 100 sheets

FS-521 Stapling Finisher

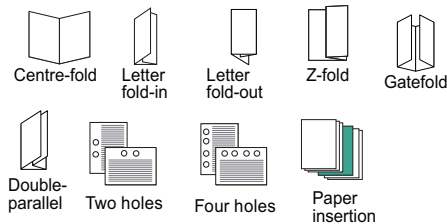


Staples up to 100 sheets* of paper and has a 3,000-sheet capacity. Corner and two-point stapling capability. In-line clinch trims long staples for a clean finish.



Six-way folding capability

FD-503 Folding Unit

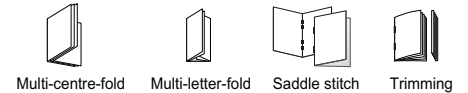


Six-way folding capability: centre-fold, letter fold-out, letter fold-in, double-parallel, gatefold and Z-fold. 2- and 4-hole punching capability with user-selectable hole positioning. Can insert cover sheets to separate sets of documents.



Make 200-page booklets

SD-506 Saddle Stitcher

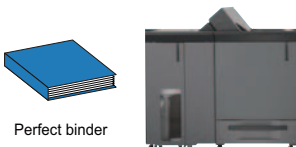


Stitches up to 50 sheets* of paper to make face-trimmed booklets up to 200 pages long with precisely aligned edges. Default trimming function produces small, clean booklets. Includes multi centre- and multi letter-folding function for up to 5 sheets*.



Perfect binding of up to 600 pages

PB-503 Perfect Binder



Binds up to 300 sheets* of paper or paper stacks less than 30 mm thick. Includes in-line gluing function and paper alignment technology that eliminates the need for three-way trimming.

10 A4-size punch patterns

GP-501 Multi Punch



A4-size punch patterns
10 different configurations
Note: The die set is required and sold separately.

Interchangeable die set provides 10 different hole-punching configurations for A4-size paper.

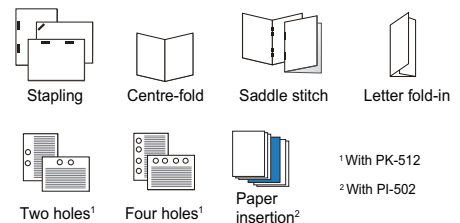
(Not available in all areas.)



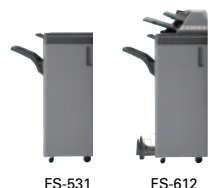
General purpose multi-functionality

FS-531 Stapling Finisher/

FS-612 Stapling and Saddle Stitching Finisher



Staples up to 50 sheets* of paper. Compact units can be expanded with optional PK-512 Punch Kit and/or PI-502 Post Inserter. FS-612 has centre and letter folding capability and saddle stitches up to 20 sheets* to make 80-page booklets. Ideal for producing marketing collateral and corporate documents.



Note: The number of punch holes may vary depending on the market. * 80g/m² paper

High speed for increased productivity
Fast 71 ppm (C7000) and 60 ppm (C6000) printing*

The ultra high-speed colour output capability of bizhub PRESS C7000/C6000 makes short work of even long, double-sided documents. From simple leaflets to multi-page booklets, you'll be assured of fast print speeds for a more efficient workflow.

* A4-size, single-sided



High capacity for long print runs

Max. 7,500 sheets in less time
PF-602 Paper Feed Cabinet

Minimise downtime spent reloading paper with high-capacity paper trays and optional paper feeders. The main unit comes equipped with three 500-sheet paper trays for a total of 1,500 sheets. Paper capacity can be increased to 7,500 sheets with the optional two-tray PF-602 Paper Feed Cabinet.* Switching to a different paper source is performed automatically if the same size paper has been loaded in an alternate tray.

* 80g/m² paper; ejected

Boost to 4,250-sheet paper capacity
LU-202 Large Capacity Unit

Compact, yet featuring a high-volume capacity, the optional LU-202 Large Capacity Unit holds up to 2,500 sheets. When combined with the optional 250-sheet MB-504 Multi-bypass Tray and 1,500-sheet main unit, the total capacity becomes 4,250 sheets.

Stack up to 10,000 sheets
LS-505 Large Capacity Stackers

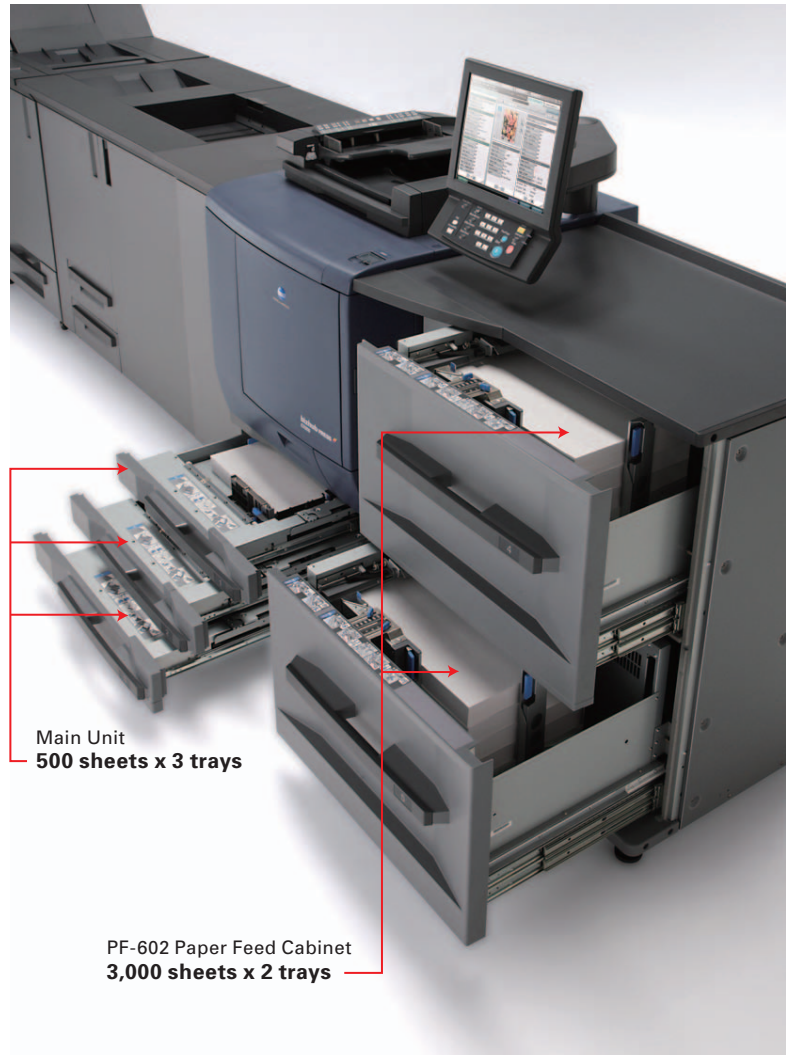
Equipped with two optional LS-505 Large Capacity Stackers, each with 5,000-sheet capacity, bizhub PRESS C7000/C6000 can stack up to 10,000 sheets* of output. Each stacker includes a dolly for easy transport of finished documents from the work area.

* 80g/m² paper; ejected



RU-509 relay unit

The new colour density sensor provides effortless colour density control and is compatible with two types of optional curl correction mechanisms. Also with relay unit for connecting paper ejection-related finishing option.



Robust reliability, maximum uptime

Precise, dependable operation you can count on, job after job. Built to withstand the rigours of high-volume use, the assured reliability of bizhub PRESS C7000/C6000 delivers increased uptime, a must for busy printing businesses.

Long-life consumables for better uptime

Long-life consumables increase uptime, allowing long print runs with vastly decreased interruptions. Lifecycles of the drum, developing unit and intermediate transfer unit have been appreciably extended. Toner cartridges are shaped for maximum yield and have greater capacity than those of previous models. Cartridges can even be replaced on the fly without stopping the print run. Other user-replaceable parts ensure long-lasting operation and peace of mind.



Toner bottles

Highly rigid frame body

bizhub PRESS C7000/C6000 utilises a highly rigid frame and box-type double-layered chassis to achieve excellent durability even under heavy, continuous usage. The rigid frame body helps prevent vibration and twisting for steady performance.



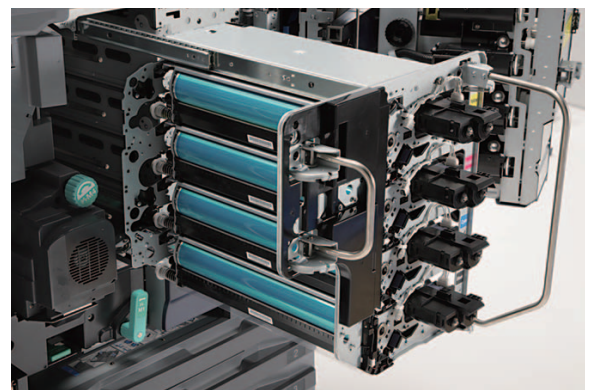
Rigid frame body

Easy paper loading and general maintenance

O.R.U.M. (Operator Replaceable Unit Management)*

Less time spent waiting for a service representative should problems arise translates into greater productivity for your business. Konica Minolta's O.R.U.M. further maximises system uptime by offering a range of user-replaceable parts and preventative maintenance measures that can be performed in-house. Moreover, front-access simplifies maintenance procedures.

* Not available in all areas.



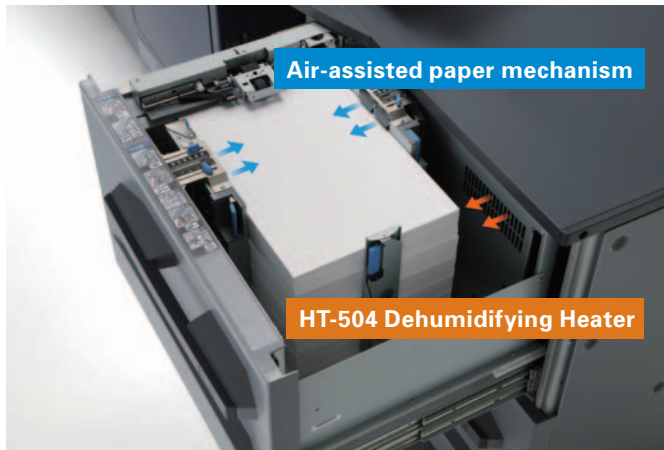
Developing unit



Smoother feeding, even with coated paper

Air-assisted paper feeding

The optional PF-602 Paper Feed Cabinet and LU-202 Large Capacity Unit are equipped with an air-assisted paper feed mechanism. This dramatically reduces mis-feeds by blowing air at constantly changing force and frequency, effectively separating sheets before they are fed into the printer — even coated paper in humid conditions when using the optional HT-503 or HT-504 Dehumidifying Heater. Air flow is automatically applied when printing on coated stock.



Excellent paper handling, extensive profiling

Support for a wide variety of paper sizes from postcard to A3-wide expands printing possibilities. The main unit can handle paper from 64g/m² to 300 g/m². In addition, bizhub PRESS C7000/C6000 can store profiles on up to 500 kinds of paper that can be recalled as needed, eliminating time-consuming manual setting operations.

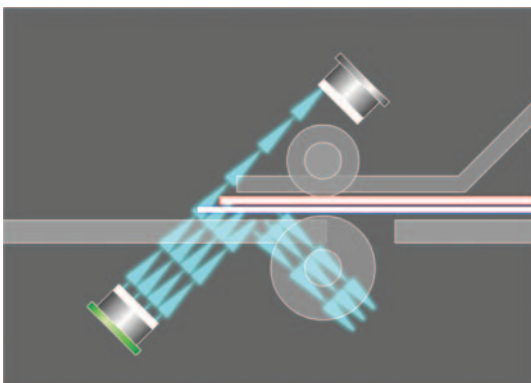


* PF-602 Paper Feed Cabinet, LU-202 Large Capacity Unit and Multi-bypass Tray

Reduce occurrence of blank pages

Multi-feed detection sensors

Ultrasonic sensors built into the optional PF-602 detect multi-feeding of paper by comparing ultrasonic waves reflecting off the paper. If multi-feeding does occur, the C7000 series automatically stops printing. This greatly reduces printing errors caused by blank pages being mixed in with the output.

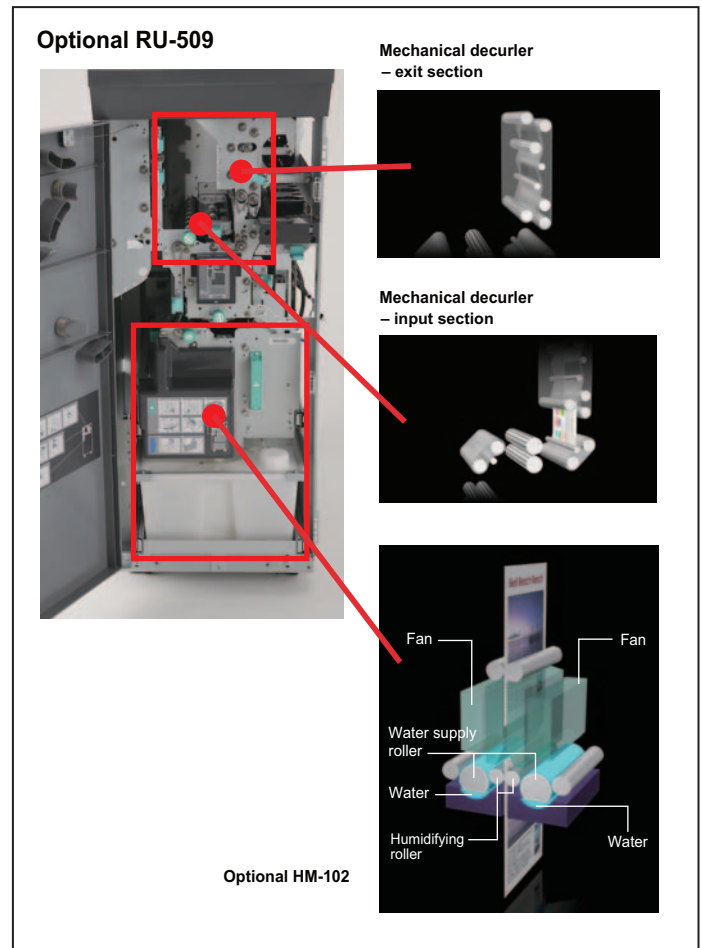


Sensor detects multi-feed when ultrasonic waves are reflected by the extra sheet.

Greatly reduce paper curl

Hybrid decurling

Two different types of curl correction are available to prevent paper waving or warping. The optional RU-509 Relay Unit employs a mechanical decurler suitable for both coated and uncoated papers. Decurl strength is adjustable over five steps and in both directions. The optional HM-102 ICE (Inter-cooler Curl Eliminator) humidifies the paper passage to remove unwanted static electricity and heat from the paper. This reduces the curling and clinging of paper to realise highly accurate paper delivery.



Clear jams fast

Improved paper jam control

Jammed paper can be stopped at specific locations for easy removal thanks to an improved paper jam detection mechanism. The position of the jam appears on the display, allowing fast hassle-free removal of paper.

