

WORKiO – Options & Specifications



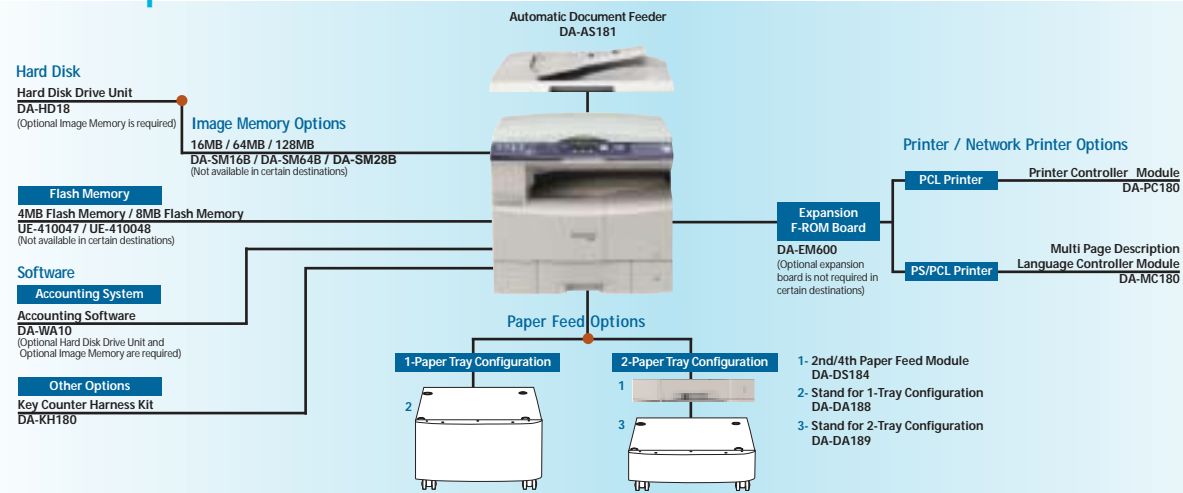
Panasonic
ideas for life

digital imaging systems

DP-1520P

the **SMART** way to work

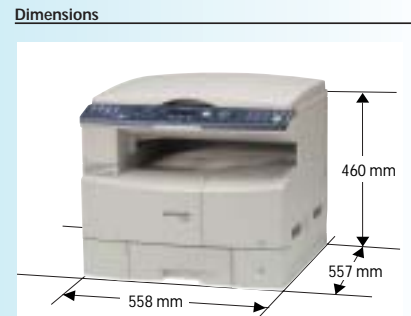
DP-1520P Options



DP-1520P Specifications

| General function | |
|--|---|
| Type | Desktop |
| Copy / Print Process | Laser Indirect Electrostatic |
| Developing Process | Dry Dual Component |
| Automatic Document Feeder (Option) | 50 sheets (A4, 75 g/m ²) |
| Paper Feed | Std. 550-sheet paper tray x 1 + 50-sheet bypass Max. 1,150 sheets with option |
| Paper Weight | Paper Tray: 60 to 90 g/m ² Bypass: 55 to 133 g/m ² |
| Power Requirements | AC 220-240 V, 50/60 Hz, 6.5 A |
| Power Consumption | Max.: Less than 1.3 kW Power Saver mode: Approx. 19.5 W Sleep mode: Approx. 9.5 W |
| Warm-up Time | Approx. 30 sec. (Main power switch ON) Approx. 30 sec. (Sleep mode) |
| Dimensions (W x D x H)*1 (H=Height To Platen Glass) | 558 x 557 x 460 mm (Excluding optional equipment) |
| Weight*1 | Approx. 43.6 kg (Excluding optional equipment) |
| Digital Copier function | |
| Resolution | 600 x 600 dpi |
| Gray Scale | 256 steps |
| Multi Copy Speed*2 | 15 cpm |
| Maximum Original Size | A3 |
| Copy Size | A3-A5 |
| Copy Ratio | Enlargement (fixed) 200%, 173%, 141%, 122%, 115% Reduction (fixed) 87%, 82%, 71%, 58%, 50% |
| Zoom (variable) | 50-200% (in 1% increments) |
| Multiple Copy | 1 to 999, Automatic reset to 1 |
| Exposure Control | Text, Text/Photo, Photo |
| Sort Memory (Standard) | 16 MB |
| (Option)*3 | Base Memory plus 16 MB / 64 MB / 128 MB 12 GB (with optional HDD) |

| Printer function | |
|--------------------------------------|---|
| Network Printer Interface | Ethernet 10Base-T/100Base-TX |
| Communication Protocol | TCP/IP, LPR (LPR), IPP, AppleTalk (PS), SNMP, DHCP |
| Local Printer Interface | USB 1.1 |
| Printer Language (Standard) | Panasonic Printing System for Windows® |
| (Option) | PCL 5e Emulation*4, PCL 6 Emulation*4 Adobe® PostScript®3™*5 |
| Printing Speed*2 | 15 ppm |
| Paper Size | Paper Tray: A3-A5 Bypass: A3-Envelope (DL) |
| Printing Resolution | 1,200 dpi equivalent x 600 dpi (PCL, PS) 600 dpi x 600 dpi, 300 dpi x 300 dpi (GDI, PCL, PS) |
| Printer Memory | 20 MB |
| PCL/PS Spool Memory | 6 GB with optional HDD |
| Compatible Client Operating Systems | Windows® XP/2000/Server 2003*6, 98, Me, Windows NT® 4.0 MacOS 8.6-10.2 |
| Compatible Network Operating Systems | Windows NT 4.0, Windows 2000/Server 2003*6, Unix (LPR), Linux (LPR) |



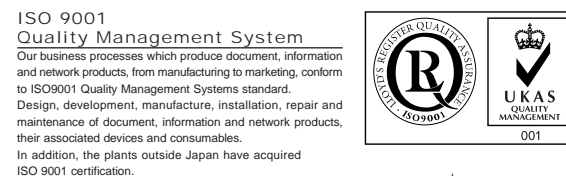
Notes

*1 Dimensions and weight are approximate.
*2 Speeds are contingent upon applications, machine configuration, and status. Individual speeds may vary.
*3 May not be available in certain destinations.
*4 Printer Controller Module or Multi Page Description Language Controller Module option required.
*5 Multi Page Description Language Controller Module option required.
*6 Available in the 3rd quarter of 2004.

Design and specification are subject to change without notice. Not all options may be available at the time of notification.

Microsoft® Windows® and Windows NT® are registered trademarks of Microsoft Corporation.
Adobe, PostScript and PostScript 3 are either registered trademarks or trademarks of Adobe Systems Incorporated in the United States and/or other countries.
PCL is a registered trademark of Hewlett-Packard.
WORKiO™ is a trademark of Matsushita Electric Industrial Co., Ltd.
All other brand or product name are the property of their respective holders.

Panasonic®



As an Energy Star® Partner, Panasonic has determined that this product meets the Energy Star® Guidelines for energy efficiency.



This brochure is printed on recycled paper.

MG-C442EE-2 0405 Printed in Japan



15 cpm / 15 ppm
Digital Copying / Printing

Standard Network Printing /
Document Manager Software

Space-saving
Inner Tray Design

WORKiO™
DIGITAL IMAGING SYSTEMS

WORKiO – Fits easily into your workplace

Welcome to the world of WORKiO digital imaging platforms where digital communications and imaging technology converge. Integrating the multiple functions of copying and printing into one compact, easy-to-use solution, the WORKiO DP-1520P empowers your workplace with more versatility, productivity and network connectivity to truly become "the SMART way to work."



compact, networkable workgroup solution



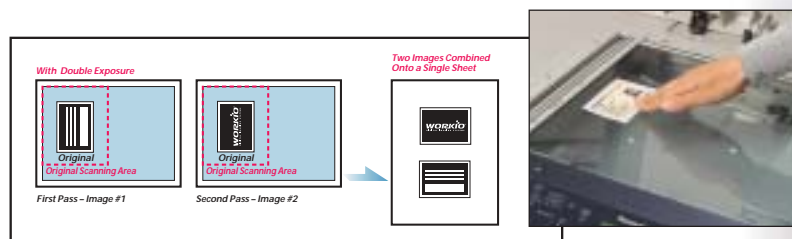
Combining copier and printer functions in a single platform with A3-size capability, the DP-1520P provides a practical, cost-effective solution for office document processing. And with the standard 10/100 Ethernet interface, it is ready to serve as a **network printer**. Its compact "wingless" design enables **installation anywhere**, even on a desktop corner, saving valuable office space. As with all WORKiO platforms, the DP-1520P is designed for maximum ease of use. ■

"wingless" for true compactness

By moving the output tray "inside" and eliminating protruding paper trays, WORKiO's small footprint represents virtually all the space required for setup.

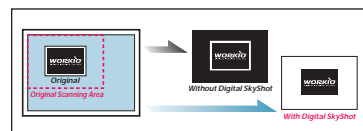
high-speed digital copier

The DP-1520P copies at a quick 15 ppm with sharp 600dpi quality, provides A3-size input and output, and improves efficiency with **Double Exposure**, **2-in-1 copying**, **Digital SkyShot** and **Image Rotation**. An Automatic Document Feeder is available as an option to accelerate copying of multi-page originals. And with standard electronic sorting, you won't have to hand-sort those larger copy jobs. In addition to 600 x 600 dpi resolution and a 256 level gray scale, the DP-1520P provides consistently optimum image quality by monitoring and adjusting for room temperature and humidity conditions. ■



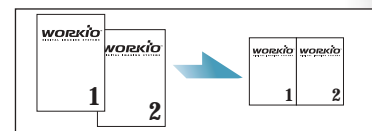
Double Exposure **WORKiO Original**

By selecting the Double Exposure key located on the control panel, users can make quality copies of double-sided documents on a single sheet of paper without the black borders, even if the platen cover is open. This is especially convenient for copying small double-sided originals such as ID and insurance cards, cheques and receipts.



Digital SkyShot

By making a copy with the cover open, this convenient function eliminates annoying black borders that also waste toner.



2-in-1 Copying

This handy feature saves paper by fitting two reduced images on one sheet.

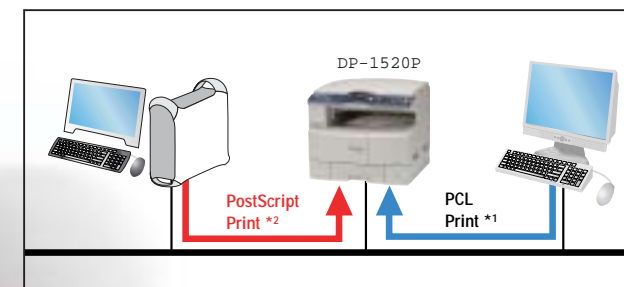


Image Rotation

No matter the orientation of the original, this feature delivers accurate copies.

high-speed network ready A3-size printer

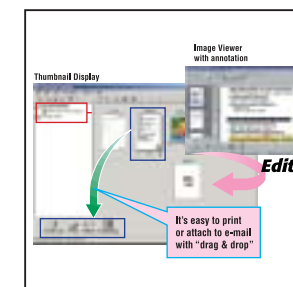
When connected to your office LAN via the standard 10Base-T/100Base-TX Ethernet interface, the DP-1520P serves as a **high-speed, high-quality** laser printer capable of handling documents up to A3 size. Even when performing at a quick 15 ppm (A4 size), the printer maintains sharp 1,200 dpi equivalent x 600 dpi*1 image quality. This standard connectivity will allow all the PCs on your LAN to take advantage of the printing capabilities and cost savings afforded by the WORKiO DP-1520P. And for connecting to an individual PC, a USB interface is also provided as standard equipment. ■



network interface

WORKiO is about sharing networked resources and multiplying their effectiveness. With the standard 10Base-T/100Base-TX Ethernet interface, all networked PCs can access the power and performance of network printing from the desktop. Optional PCL 6/PS3 expand printing versatility and 1200 dpi x 600 dpi equivalent quality.

*1 Optional Printer Controller Module is required.
*2 Optional Multi Page Description Language Controller Module is required.

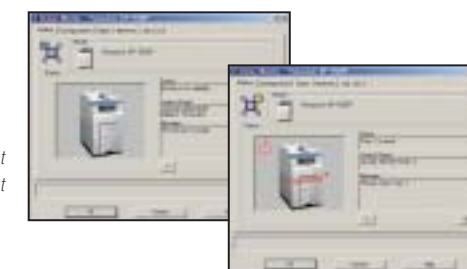


Document Manager software

Image Viewer enables the user to easily view, annotate or attach memos to the file. With "drag and drop" simplicity, users can manage and edit documents from their desktop PC, and even share them with other PCs.

Status monitor

Status Monitor lets users check the current status of the WORKiO DP-1520P without leaving their desks.



environment-friendly design

The EnergyStar-compliant DP-1520P contributes to lower Total Cost of Ownership (TCO). In sleep mode, energy requirements drop to virtually nothing. The work environment is also quieter and cleaner thanks to reduced noise and ozone emissions. ■



Digital imaging with greater ease and versatility.